

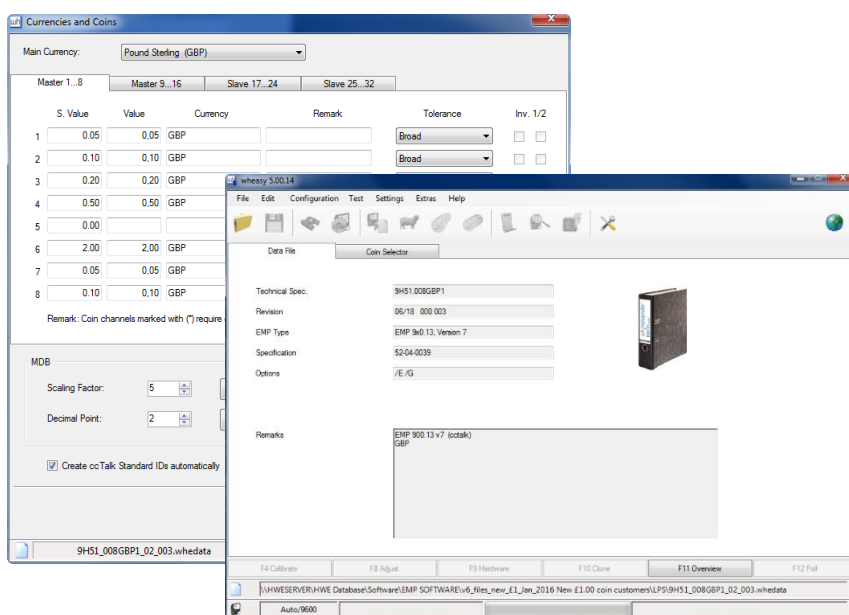


Hemisphere West Europe
PAYMENT SPECIALISTS

wh münzprüfer
berlin gmbh

wh Münzprüfer Berlin

wheasy 5



Professional Service Software

Windows 7™ and Windows 10™

For all electronic coin selectors version v3 to v7

Cloning and calibration function

Firmware update

Hardware test routine

Distributed by:



HEMISPHERE WEST EUROPE LTD
Unit 85-87 Shrivensham Hundred Business Park,
Majors Road, Watchfield, Oxfordshire,
SN6 8TY UK

+44 (0) 1793 780461
www.hweurope.com
sales@hweurope.com



Hemisphere West Europe
PAYMENT SPECIALISTS

wh münzprüfer
berlin gmbh

Description

wheasy 5 is a user-friendly Windows™ software program for testing and programming EMP electronic coin selectors manufactured by wh Münzprüfer GmbH. EMP coin selector models 500, 770, 780, 800 & 900 from v3 to v7 can be interrogated and the settings changed by a PC or notebook using wheasy 5 software. wheasy 5 includes wheasy 3 for all electronic coin selector models EMP 500, 770, 780, 800 and 900 v3 to v5.

Main features

Test

The command "Autopoll" allows to easily check the coin processing such as coin acceptance rate, rejection of counterfeits and sorting of coins. Additional inbuilt test functions enable thorough testing of overall operation of the coin selector. You may test the proper function of the measuring system, the dip switches, the light barriers, the output lines and the solenoids.

Cloning Function (programming without coins)

Programming new coins or currencies. Using the cloning function, data sets including latest coin information available from Hemisphere West Europe LTD may be safely transferred directly to any number of coin selectors in your inventory, in the safe knowledge that quality of coin discrimination is maintained throughout.

Firmware Update

Using the function "firmware update" (flash technology) a new microprocessor software may be transferred into the coin selector.

Scope of Delivery

wheasy 5 is supplied with an interface converter (dongle) and all cables to connect the coin selector the power supply N 780 and the USB interface of your computer. The voltage supply for the coin selectors is provided via the power supply N 780. This version is recommended for all coin selectors with parallel interface.

wheasy 5 mobile is supplied with an interface converter (dongle) and all cables to connect the coin selector to the USB interface of your computer. To supply voltage to the coin selector, a power supply N 7B8 with 2.1mm DC connector (5.5mm outer diameter, centre positive) is available. This version is recommended for all coin selectors with serial interface.

Distributed by:



HEMISPHERE WEST EUROPE LTD
Unit 85-87 Shrivensham Hundred Business Park,
Majors Road, Watchfield, Oxfordshire,
SN6 8TY UK

☎ +44 (0) 1793 780461
🌐 www.hw europe.com
✉ sales@hw europe.com